



Nylofor® City

Installation manual

0. Content

1. Components of the fencing system

1. The posts
2. The panels
3. The clamps

2. Installation of Nylofor City

1. Foundations
2. Install posts
3. Install panels

1. Components of the fencing system

1. The posts
2. The panels
3. The clamps

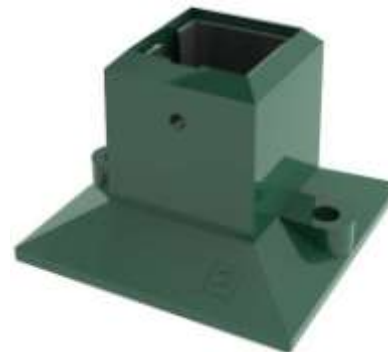
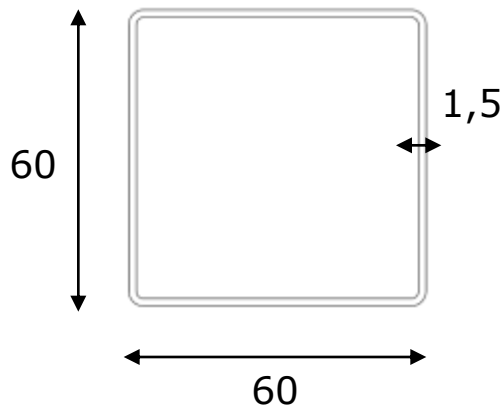
2. Installation of Nylofor City

1. Foundations
2. Install posts
3. Install panels

1. Components of the fencing system

1.1 The posts

- The section of the post is always 60x60x1,5mm
- Types: intermediate posts (same as end posts) and corner posts
- The posts are foreseen of the appropriate holes and inserts for the fixation of the panels
- Posts are covered with an aluminium post cap
- Posts can be installed in concrete or on aluminium floor plates (glued to the posts)



CONCRETE



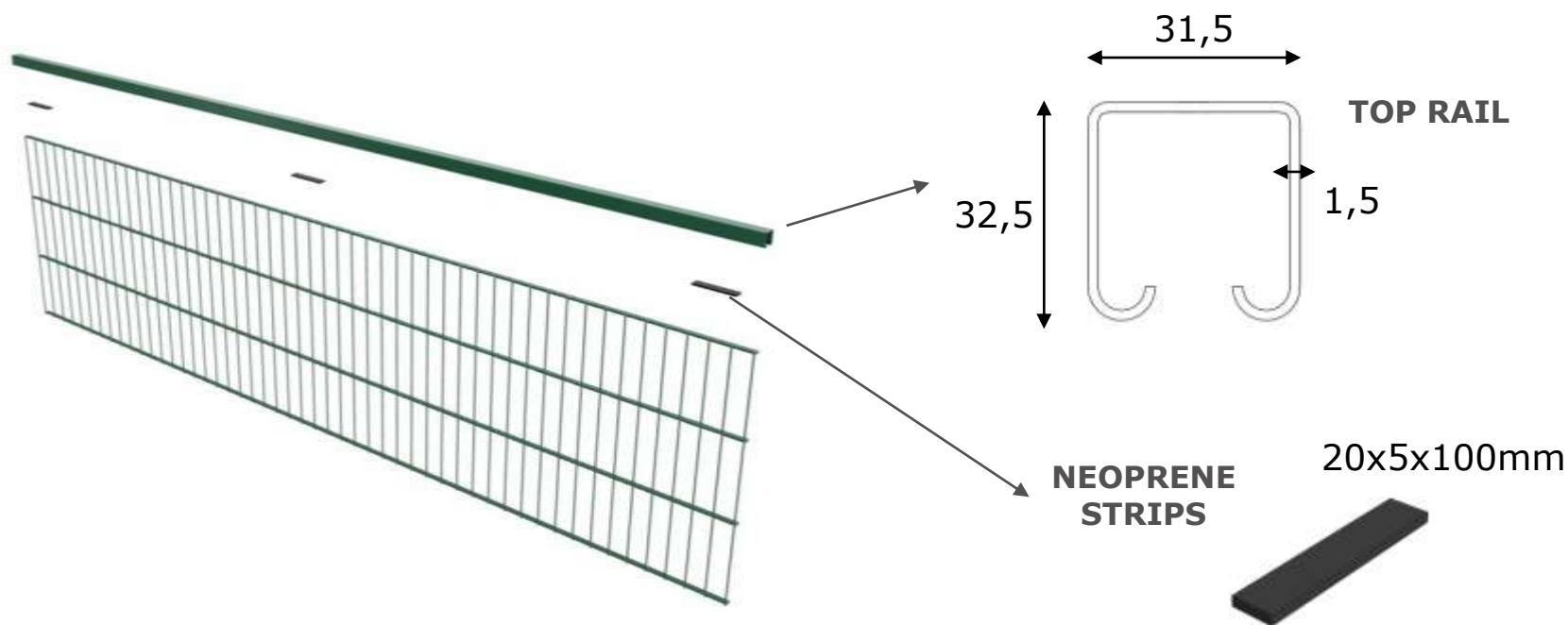
FLOORPLATE



1. Components of the fencing system

1.2 The panels

- Nylofor City is always installed with Nylofor F panels. Panels with overhangs are mounted with the pins on the bottom
- A top rail is mounted on top of the panel to have additional rigidity, standard length 2505mm
- Neoprene strips are glued in between the top rail and the Nylofor F panel to avoid vibrations that can cause noise (3 pieces/panel)



1. Components of the fencing system

1.2 The panels

- Standard range of panels and posts:

Height of the fence (mm)	Panel dimensions WxH (mm)	Length of the posts in concrete (mm)	Length of the posts on floorplate (mm)	# inserts
606	2500x606	1000	647	3
1006	2500x1006	1500	1047	3
1206	2500x1206	1750	1247	4
1406	2500x1406	2000	1447	4
1606	2500x1606	2200	1647	5
1830 *	2500x1830	2400	1847	5
2030 *	2500x2030	2650	2047	6

* Nylofor® F panels are standard with overhangs when height > 1,6m

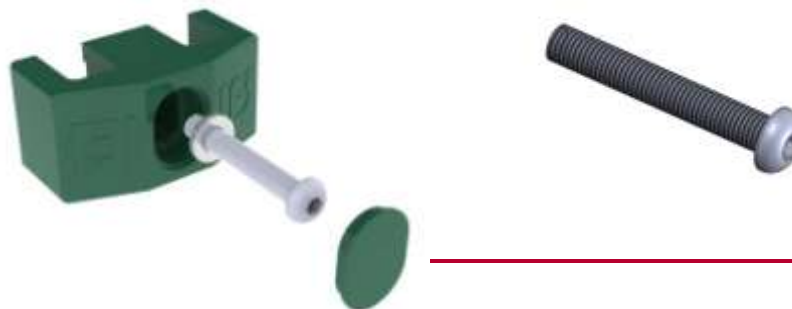
1. Components of the fencing system

1.3 The clamps

- Nylofor City is installed with one metal clamp on top to hold the rail, the other clamps are standard Nylofor F clamps (PA)
 - There are 3 types of metal clamps: an intermediate clamp, a left corner clamp and a right corner clamp. Corner clamps are also used for end posts. They are fixed with Hexagon Socket Button Head screws (ISO7380) **M6x60** in stainless steel.



- Nylofor clamps for Nylofor F. The plastic clamps are fixed with Hexagon Socket Button Head screws (ISO7380) **M6x40** and washer M6, in stainless steel. When fixing a clamp on the floorplate on the bottom, also use **M6x60**.



1. Components of the fencing system

1. The posts
2. The panels
3. The clamps

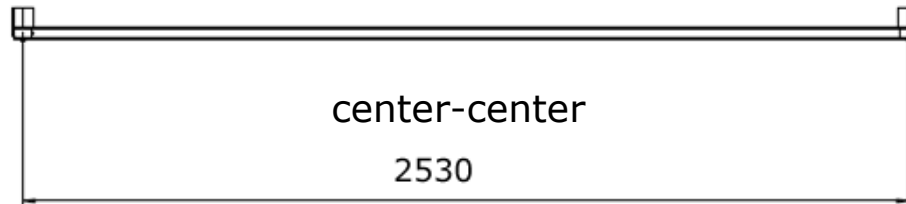
2. Installation of Nylofor City

1. Foundations
2. Install posts
3. Install panels

2. Installation of Nylofor City

2.1 Foundations

- To obtain the best result, it is recommended to level the ground over the whole length of the fence
- Align the fence line
- For correct positioning, maintain the centre-centre distance of 2530mm (with a tolerance of +/- 5 mm)
- To determine the dimensions of the foundations it is recommended to consult a specialized engineer to evaluate wind load and solar conditions and any other factors requiring specialist opinion (concrete quality directive B30)
- In case of instant installation the post needs to be supported as long as necessary



2. Installation of Nylofor City

2.2 Install posts

- Installation principle: when installing Nylofor City, first all the posts can be placed and then the panels can be attached

ALIGNING THE POSTS

- Place a pin before the first post of the fence and another behind the last post. Connect those pins with two guide ropes
- The lower guide rope should be between 20 and 40 cm above the ground. Now align all inserts with the upper guide rope

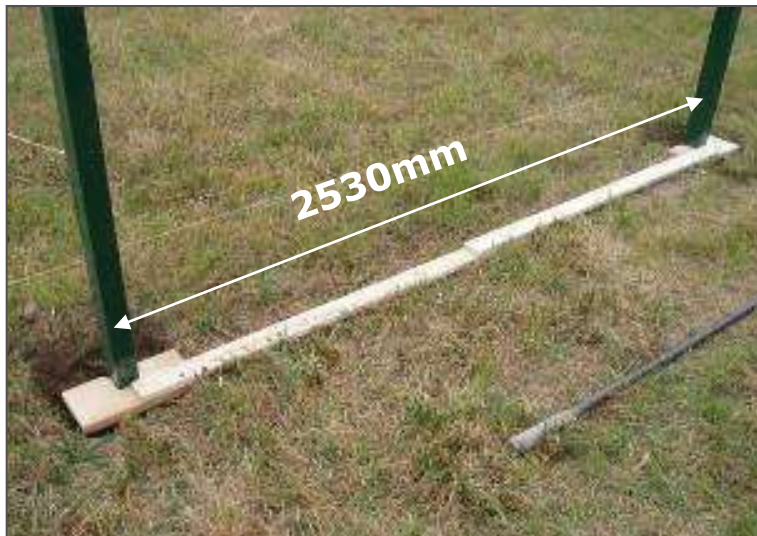


2. Installation of Nylofor City

2.2 Install posts

PLACEMENT OF THE POSTS (USE A TEMPLATE)

- A template makes it much easier to place the posts correctly
- The template must be made by the installer and must have 2 recesses into which the posts fit perfectly
- The distance between the posts, measured from center-center, should be 2530 mm, with a tolerance of +/- 5 mm
- Place the posts, correctly aligned (vertically and horizontally) and with the correct distance between them.
- Use a spirit level to ensure the posts are placed perfectly vertical

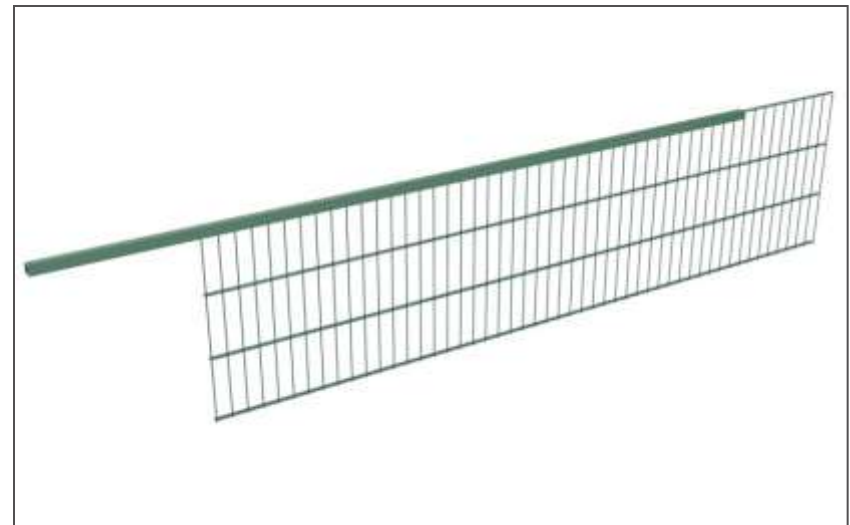
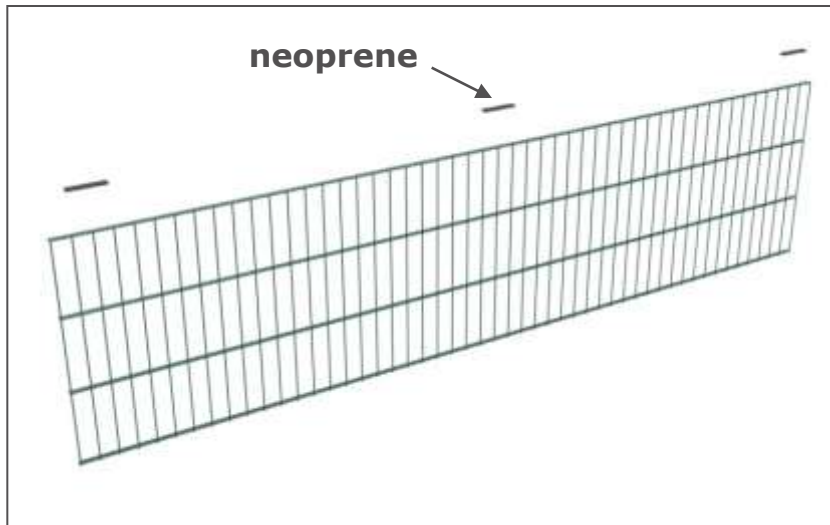
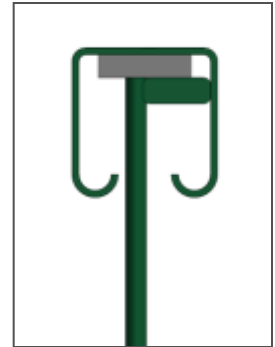


2. Installation of Nylofor City

2.3 Install panels

ASSEMBLING THE PANEL

- Glue the neoprene strips on the top of the horizontal wire of the panel. Divide 3 strips over the complete width of the panel
- Slide the panel into the top rail
- Assemble a second panel



2. Installation of Nylofor City

2.3 Install panels

INSTALLING THE PANELS

- Fasten the top of the panels with a metal clamp
- Fasten the other positions of the panels with the PA clamps
- Repeat these steps to complete the installation



2. Installation of Nylofor City

2.3 Install panels

INSTALLATION ON FLOORPLATE

- The bottom clamp is fixed on the floorplate.



2. Installation of Nylofor City

2.3 Install panels

INSTALLING THE END POST

- In case of an end post, use a corner clamp to fix the top of the panel



2. Installation of Nylofor City

2.3 Install panels

INSTALLING CORNERS / SLOPES

- In case of a corner, use a corner post with inserts on two adjacent sides. Fasten the top of the panel with left and right corner clamps
- Only corners of 90° are possible. In any other situation, two posts have to be installed
- In case of a slope, also two posts have to be used

